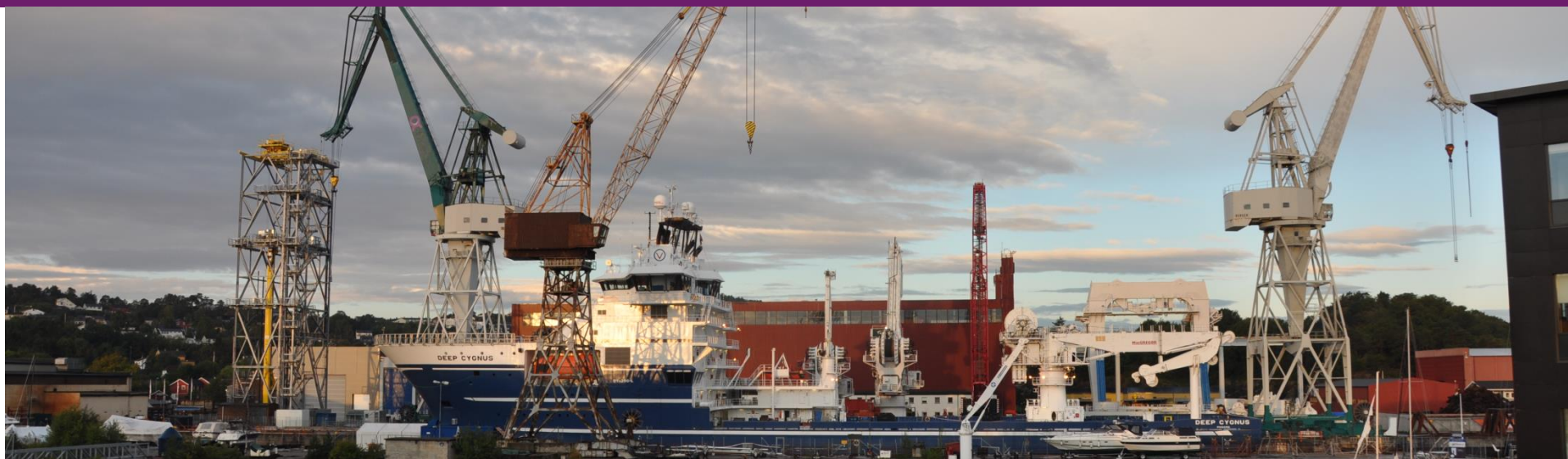




# Utstyr utleie

## OneCo Safe Yards AS





## Test Weights

OneCo Safe Yards has a large variety of test loads.

Including

Single weights:

- 1 – 150t

Combined weights:

- 150 – 300t

Trailer can transport all weights up to 44t. Other weights to be transported by barge/boat.

Price test weights

Day rate each ton 120,- NOK – minimum 2000,- NOK per day.

Transport to be quoted



## Soft slings

OneCo Safe Yards

Day rate

- 15 ton – 2-13,5 meters
- 25-30 ton 2-13,5 meters

NOK:

### Flat strap

- 10 ton-10 meters
- 20 ton-25 meters

NOK:

### Multi legged sling

- 25 ton- 5 meters

NOK:

Meters = work length



## Shackles

OneCo Safe Yards

From 1.5 to 55 ton

Day rate:

NOK: 50- 200,



# Eyebolts, Master links, container hooks



## Eyebolts, Master links, container hooks

OneCo Safe Yards

- eyebolts 0,25 ton to 8 ton
- VLBG load ring m48- 20t
- Master links 4 ton to 84 ton
- Container hooks 12,5 ton

Day rate:

NOK: 50-200



## Pulley

OneCo Safe Yards

Day rate:

### Lever block

From 0, 25 to 1,6 ton

NOK: 150

### Chain block

1-10 ton

NOK: 200-250

# Hydraulic jack



## Hydraulic jack

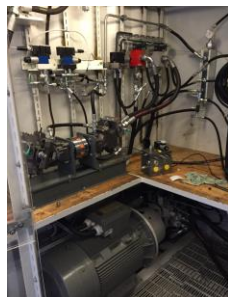
OneCo Safe Yards

From 4,97 – 50 t

Variety of lengths and lifting capacity.

Day rate:

NOK: 600



## Test container

OneCo Safe Yards

Hydraulic pressure testing, setting/ adjusting container

Including

Testing equipment for pressure up to

- 350 bar
- Fittings, couplings and hoses can be delivered with container if needed.

Day rate:

Please contact for rental price and conditions.

Only trained personnel must operate container.





## Portable HPU

OneCo Safe Yards

Hydraulic pump unit

Including

- Pump Max pressure    bar
- tank with HDZ 46 oil
- Fittings, couplings and hoses can be delivered with HPU if needed.

Day rate:

NOK: 800

Fittings, couplings and hoses to be quoted.



## Flushing HPU

OneCo Safe Yards

Hydraulic pump unit

Including

- Two Pumps x 1523 l/ min on 10-16 bar.
- tank with HDZ 46 oil
- Fittings, couplings and hoses

Day rate:

NOK: contact for more info

Fittings, couplings and hoses to be quoted.

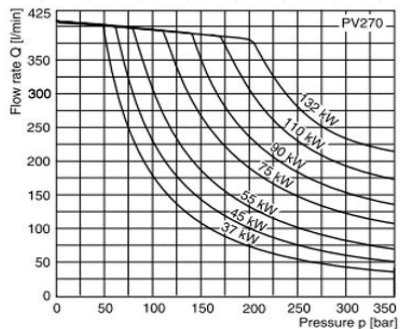
HPU 1 motors. 1 x 405 liter/ min ved 50 bar. (Parker PV270 pumpe)



Selection table

| Model | Max. displacement<br>[cm <sup>3</sup> /rev] | Output flow<br>at 1500 min <sup>-1</sup> [l/min] | Input power at<br>1500 min <sup>-1</sup> and 200 bar [kW] | Max speed *<br>[min <sup>-1</sup> ] | Moment of<br>inertia [kgm <sup>2</sup> ] | Weight<br>[kg] |
|-------|---|--|---|-------------------------------------|--|----------------|
| PV016 | 16  | 24   | 15.5  |                                     |  |                |
| PV020 | 20  | 30   | 19.5  | 3000                                | 0.0017                                   | 19             |
| PV023 | 23  | 34.5   | 22.5  |                                     |  |                |
| PV032 | 32  | 44.5   | 31.5  | 2800                                |  |                |
| PV060 | 60  | 120  | 78  | 2500                                | 0.018                                    | 60             |
| PV080 | 80  | 138  | 89.0  | 2300                                |  |                |
| PV140 | 140   | 210  | 138   | 2400                                | 0.030                                    | 90             |
| PV180 | 180   | 270  | 175   | 2200                                |  |                |
| PV270 | 270   | 405  | 283   | 1800                                | 0.068                                    | 172            |

\* The maximum speed ratings are shown for an inlet pressure of 1 bar (absolute) and for a fluid viscosity of  $\nu = 30$  mm<sup>2</sup>/s.



## HPU

OneCo Safe Yards

Hydraulic pump unit

Including

- 1 motor. 1x405 liter/min. (50bar)
- tank with HDZ 46 oil
- Fittings, couplings and hoses

Day rate:

NOK: contact for more info.

Fittings, couplings and hoses to be quoted.

## 20" container with lifting equipment



### 20" container with lifting equipment

OneCo Safe Yards

Including

- Softslings 10t – 30t
- Shackles 8.5t- 55t
- Workbench, lighting and heater.

Day rate:

NOK:

Container can be fitted with soft slings from 2t - 30t in lengths from 2m-13m. Shackles from 2t - 55t.



## 6" container with Karcher steamer



### 6" container with Karcher steamer

OneCo Safe Yards

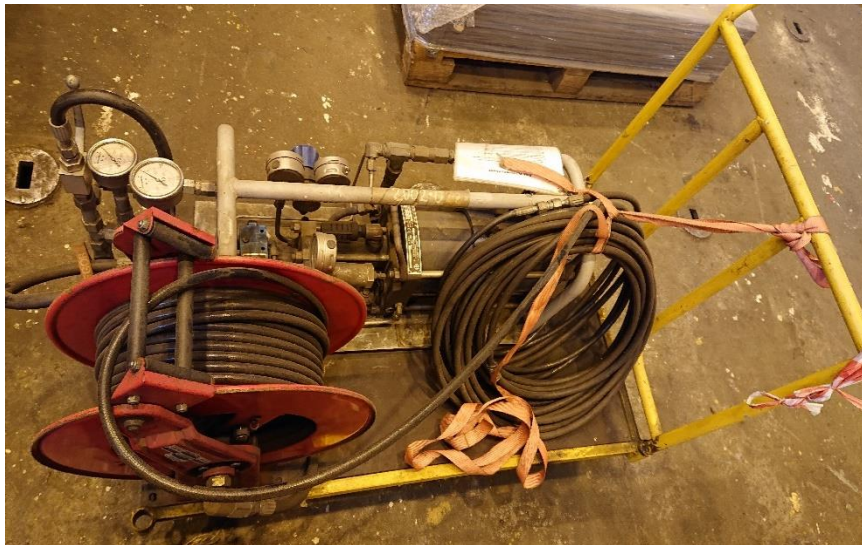
Including

- Karcher steamer
- Hose reel
- Heater.

Day rate:

NOK:

# Nitrogen booster



## Nitrogen booster

OneCo Safe Yards

Including

- Nitrogen booster
- Hose reel

Day rate:

NOK:

# Pneumatic torque tool



## Pneumatic torque tool

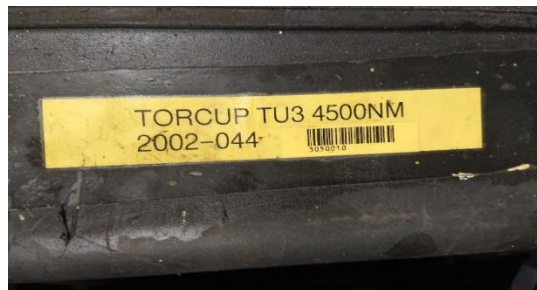
OneCo Safe Yards

Max 6000 N.m

Day rate:

NOK: 1000,-

# Hydraulic torque tool



## Hydraulic torque tool

OneCo Safe Yards

Max torque 4500N.m

Day rate:

NOK: 2500,-



# Gear puller



## Gear puller

OneCo Safe Yards

Specifications provided at request.

Day rate:

NOK: 100-200

# Pneumatic impact wrench



## Pneumatic impact wrench

OneCo Safe Yards

Day rate:

Small 320-610Nm

NOK: 200

Medium 1490Nm

NOK: 250

"Big" 2000Nm

NOK: 300

Sockets to be delivered on request

# Flatbed Trolley

| No. | Item  | Description                              |
|-----|---|--|
| 1   | Rated loading capacity                                | 320,000kg                                |
| 2   | Curb weight   | 70,000kg                                 |
| 3   | Gross weight  | 400,000kg                                |
| 4   | Platform length                                       | 18,500mm                                 |
| 5   | Platform width  | 6,100 mm                                 |
| 6   | Overall length  | 18,500mm                                 |
| 7   | Platform Height                                       | 1,950mm                                  |
| 8   | Min platform height                                   | 1,650mm                                  |
| 9   | Max platform height                                   | 2,350mm                                  |
| 10  | Platform movement                                     | ±300mm                                   |
| 11  | Axes/suspension                                       | 6/12                                     |
| 12  | Drive axle Qty  | 4  |
| 13  | Driven axle Qty                                       | 8  |
| 14  | Full-load Max speed                                   | 6Km/h                                    |
| 15  | No-load Max speed                                     | 12Km/h                                   |
| 16  | Full-load climbing capacity (longitudinal/horizontal) | 6/2%                                     |
| 17  | Road clearance  | ≥150mm                                   |
| 18  | Tire size Qty   | 12.00-20/48                              |
| 19  | Rim size Qty  | 8.50V-20/48                              |
| 21  | Engine brand  | DEUTZ                                    |
| 22  | Engine model/power                                    | DEUTZ BF6M1015CP/330KW/2100r/min         |
| 24  | Cab   | Two                                      |
| 25  | Working road  | Cement, asphalt and compacted stone road |



## Flatbed Trolley

OneCo Safe Yards

Capacity

- 320 ton
- Length 18,5 m
- Width 6,1 m

Day rate:

NOK: contact for info and rental prices.

Only Trained personnel can drive trolley.



## Hawser winch

OneCo Safe Yards

Capacity

- Spec 1.  
30rpm – 900 Nm
- Spec 2.  
25 rpm – 1570 Nm  
(Hawser dimension is not included in calculation.)

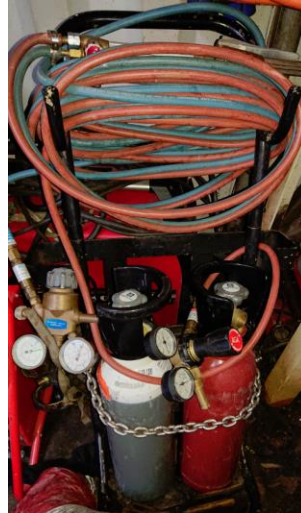
Day rate:

NOK:

**These are also for sale.**



## Cutting torch   Plasma cutter



### Cutting torch   Plasma cutter

OneCo Safe Yards

Gas not included in rate, but be arranged on request.

Day rate:

Cutting torch


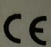
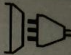
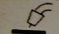
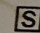
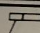
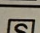
NOK: 200,-

Plasma cutter

NOK: 400,- (Ex spareparts)

# Welding machine



|   |  |  |                      |   |       |  |  |  |   |   |
|---|--|--|----------------------|---|-------|--|--|--|---|---|
| <b>ESAB AB</b><br>Box 8004, SE-46277 Göteborg, Sweden<br>Produced by<br><b>QZAS-ESAB Ltd.</b><br>ul. A. Struga 18, 43-873 Opole, Poland<br>Made in Poland |  |  |                      |   |       | <br>3~50/60Hz |  | U <sub>1</sub> =380V<br>U <sub>1</sub> =400V<br>U <sub>1</sub> =440V | I <sub>max</sub> =36A<br>I <sub>max</sub> =36A<br>I <sub>max</sub> =31A | I <sub>ref</sub> =27A<br>I <sub>ref</sub> =26A<br>I <sub>ref</sub> =24A |
| <b>Mig 5004i</b>  |  | SER. NO.<br>211-317-5187                       |                      | IEC/EN 60974-1<br>IEC/EN 60974-10   |       | IP 23  |  | Class A  |   |   |
|    |  | 16A/15V - 500A/39V                             |                      |   |       |  |  |  |   |   |
|   |  | X  | 60%                  | 80%   | 100%  |  |  |  |   |   |
|    |  | U <sub>0</sub> = 55V<br>U <sub>0</sub> VRD<35V | I <sub>2</sub> 500A  | 400A  | 350A  |  |  |  |   |   |
|   |  |  | U <sub>2</sub> 39.0V | 34.0V   | 31.5V |  |  |  |   |   |
|    |  | 16A/15V - 500A/40V                             |                      |   |       |  |  |  |   |   |
|   |  | X  | 60%                  | 80%   | 100%  |  |  |  |   |   |
|    |  | U <sub>0</sub> = 55V<br>U <sub>0</sub> VRD<35V | I <sub>2</sub> 500A  | 400A  | 350A  |  |  |  |   |   |
|   |  |  | U <sub>2</sub> 40.0V | 36.0V   | 34.0V |  |  |  |   |   |

## Welding machine

OneCo Safe Yards

Complete set

ESAB

Day rate:

NOK: 300

Week:

NOK: 1200

Gas and welding wire not included



## Scaffolding

OneCo Safe Yards

Including

Day rate for pictured example:

NOK: 200 day one

NOK: 50 day two -



## Spreader beam

OneCo Safe Yards

- WLL 125t max 11375mm
- WLL 170t max 4400mm
- WLL 80/60t

Day rate:

NOK: 1000,-

(Price for longer periods to be agreed)

Transport, mob/ demob not included.



# Service container



## Service container

### Service container

- Hand tools
- Pillar drilling machine
- Safety equipment
- Work bench
- Taper taps, round pipe dies

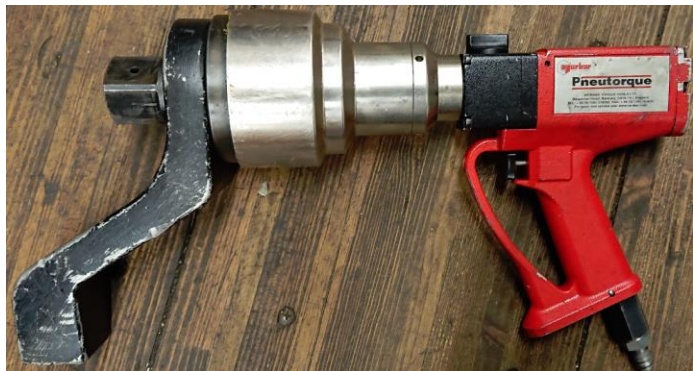
### OneCo Safe Yards

#### Day rate:

NOK: 3000

For one week 15000 (7days)

# High torque (pneumatic)



## High torque (pneumatic)

OneCo Safe Yards

- Control unit
- Max 6,9 bar
- Torque pistol
- Max 6000N.m
- Max pressure 5,374 bar

Day rate:

NOK:

(Price for longer rental periods to be agreed)



## Tool cabinet

OneCo Safe Yards

Example containment

- Shifter wrench 6-15"
- Combination spanner 8-41mm
- Double ended joint spanner 10-19mm
- Hammer 2kg
- Hammer 0,68kg
- Screw drivers
- Measuring tape 5m
- Metric Allen key set 1.5-10mm + single 12,14,17 and 19mm . inch 0.05"-3/8"

Please contact us for complete list.

Day

rate:

NOK:

(Price for longer rental periods to be agreed)